



EXTRA SLICK

The smooth waterproof surface lets the water flow quickly away and is easy to clean, thus preventing the formation of putrescible residues.




STRONG GRIP

The special geometry of the external structure translates into high steadiness and improves the anchoring of concrete to HD-PE.




EASY TO CONNECT

The preassembled drain outlets on the sides and the bottom are easy to open and permit quick connection to the sewer system.



STACKABLE - EASY TO CARRY

The special design makes it possible to optimise palletisation, thus taking up less warehouse space and allowing easy carriage and shipping.




LIGHTWEIGHT

It is much more lightweight than traditional concrete systems, even when systems with preassembled gratings are to be handled.



LOW PRICE

Its very low weight permits easy quick installation. Installation costs are reduced, since no machines are needed to install the system.



SAFETY

MufleDrain products undergo strict quality checks in all processing stages. They are all certified EN 1433 and marked CE.



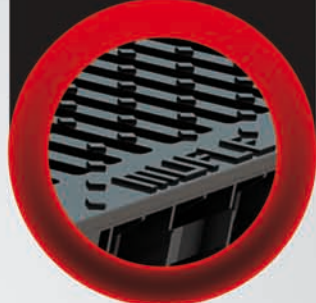
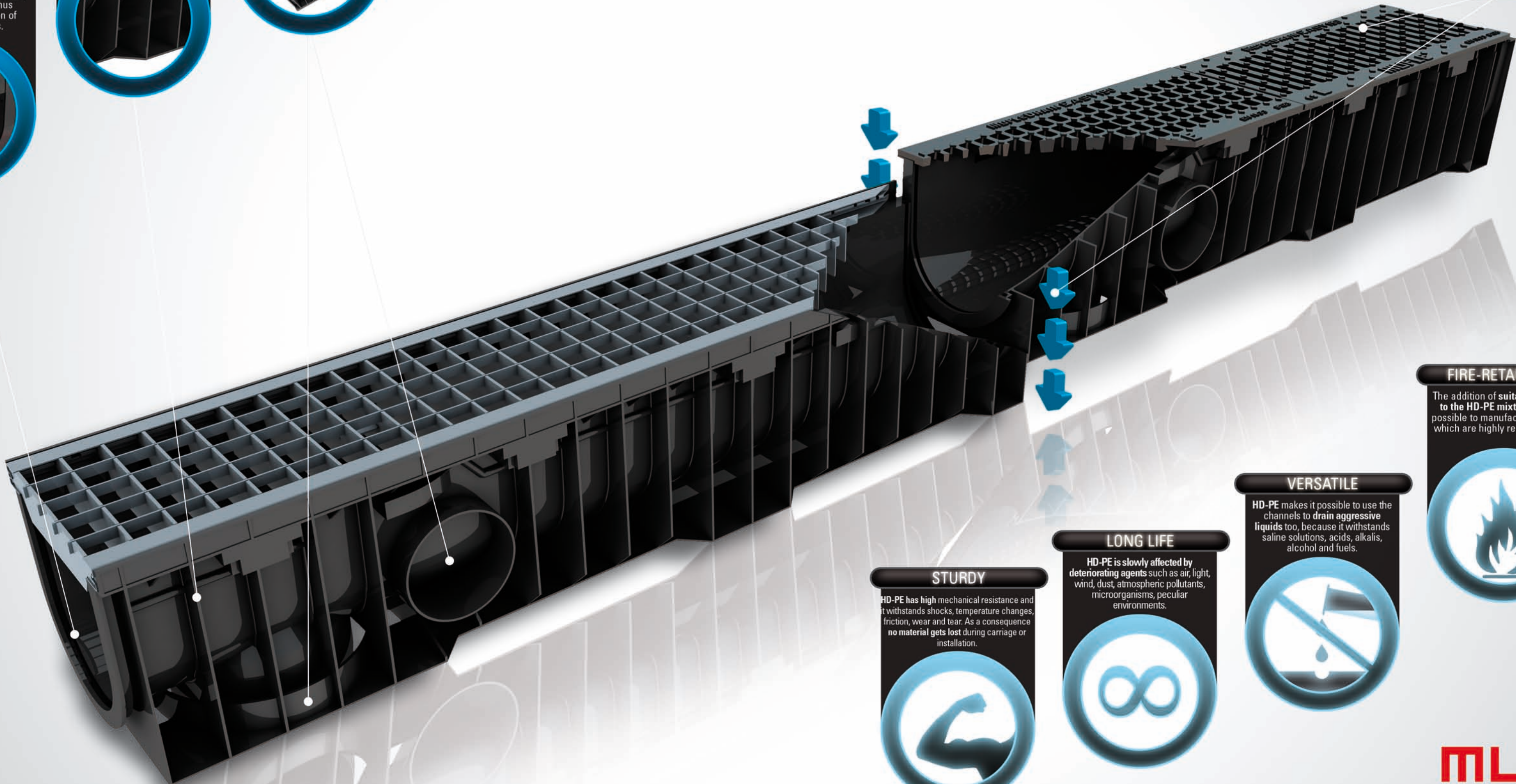
RECYCLABILITY

Completely made from recycled HD-PE (which can be recycled again), MufleDrain channels are eco-friendly products par excellence.



EASY TO ASSEMBLE

MufleDrain channels can be installed with preassembled gratings through a convenient coupling system!


STURDY

HD-PE has high mechanical resistance and it withstands shocks, temperature changes, friction, wear and tear. As a consequence no material gets lost during carriage or installation.



LONG LIFE

HD-PE is slowly affected by deteriorating agents such as air, light, wind, dust, atmospheric pollutants, microorganisms, peculiar environments.



VERSATILE

HD-PE makes it possible to use the channels to drain aggressive liquids too, because it withstands saline solutions, acids, alkalis, alcohol and fuels.



FIRE-RETARDANT

The addition of suitable retarders to the HD-PE mixture makes it possible to manufacture channels which are highly resistant to fire.

